



Halftones. Half the work.

Photo quality halftones are a wiz with the Half-Wiz halftone wizard brought to you by PhotoBrasive® and Corel®. Half-Wiz works with Corel Photo-Paint to streamline the halftoning process. Halftones. Half the work.

Corel Suite 12 with Half-Wiz

Included in Package:

- CorelDraw 12
- Corel Photo-Paint
- CorelTrace
- Corel R.A.V.E.
- Corel Capture
- Corel Barcode Wizard

PRICE **\$449**

Corel Suite 12 Upgrade with Half-Wiz

Need to have a previous version of CorelDraw

PRICE **\$199**

Half-Wiz

Need to have CorelDraw Suite version 11 or 12

PRICE **\$49**

INSTALLATION in Corel Photo-Paint 11 or 12:

1. Put the HalfWiz CD in your drive and read it.
2. You'll see the HalfWiz.gms file.
3. Using your mouse, do a right click and "copy" the file.
4. Now, minimize everything (dashed line top right of your screen).
5. Go to START and right click -- then click on "Explore".
6. Folders will appear on the left of your screen. Scroll down to "Program Files" and double click.
7. Look for "Corel" on the right set of folders, and double click on it.
8. Double click on "Corel Graphics 12".
9. Double click on "Corel PHOTO-PAINT".
10. Double click on "GMS". You will see a few files on the screen.
11. With your cursor anywhere within this window, right click and "paste".
12. The GMS file should now be there.
13. Close everything and go back to your desktop.

If you haven't placed an icon on your desktop for Corel Photo-Paint, you should do this next:

1. Go to START and left click - then to "all programs".
2. Find the program "CorelDRAW Graphics Suite". It will show a list of programs within the suite.
3. Right click on Corel PHOTO-PAINT" and go to "send to". Then choose "Desktop (create shortcut)".
4. Go back to your Desktop. The Corel Photo-Paint icon should now be there. You can rename the file or remove the reference to the shortcut if you want.
5. Now if you double click on this new icon, it should bring you directly to the Photo-Paint opening window.

The last thing to do is place the HalfWiz icon on the toolbar at the top. Follow the instruction "Quick tip" below. This does not always work with CD-11, you will need to try it first. No problem with version 12.

QUICK TIP:

Install an icon on the toolbar and get to the halftone window with just one click. Here's how:

1. In Corel Photo-Paint click on "TOOLS", then select "OPTIONS".
2. Click on "COMMANDS" (under "WORKSPACE/CUSTOMIZATION")
3. Click on "VBA MACROS", a list will appear and one should be "HALFWIZ (HALFWIZ.GMS)."
4. Click and hold to drag this icon to the tool bar on top.
5. Icon will appear there as a "tag."
5. Click "OK" to close window.

PhotoBrasive[®]
S Y S T E M S

HALFTONE INSTRUCTIONS

for use with Corel Photo-Paint 11 or 12

Scanning Photos:

Image Type: Black and White Photo or Grayscale

Resolution: 800

Size: To achieve the best quality halftone, scan the photo to the final size. Example: if the original photo is 3" x 5" and the final size is 5" x 7", scan photo at 165 percent. (To find the exact percentage, a proportional wheel is recommended. You can purchase them at a craft store.)

Sharpness: Sharpen image if needed. Go to "EFFECTS/SHARPEN."

Opening an Existing File:

Open Corel Photo-Paint

Click "FILE", and then select "OPEN". Navigate to where your file is, select the file, and click "OPEN"

Click "IMAGE"

Click "RESAMPLE", then change the image to final size

Click "OKAY"

Start the Halftone Procedure:

Option 1 (using "tools")

Click "TOOLS"

Click "VISUAL BASICS"

Click "PLAY" (See Figure A), go to "MACROS IN"

Click "HALFWIZ (HALFWIZ.GMS)" (See Figure B)

Click "RUN", select the Halftone Angle and Halftone Line Screen you wish to use. (See Figure D)

Click "APPLY"

Option 2 (using installed icon)

Click on your shortcut icon (See Figure C)

Click "RUN", select the Halftone Angle and Halftone Line Screen you wish to use. (See Figure D)

Click "APPLY"

Remember:

Making a halftone image requires good contrast between objects within the photo. Try to avoid EXTREME contrast/brightness levels. A white wedding dress or black tuxedo, for example, should both be grayed slightly in order to produce a good halftone. Half-Wiz will automatically make these adjustments, but you should check the contrast by printing on plain paper first. If you want more contrast uncheck the "Contrast Enhancement" box. With Rapid Mask, use a photopositive for halftones. With washout films, use a photonegative. While Letralite exposure will work, best results and resolution are achieved with a vacuum frame particularly for halftones. A high pressure washer is also recommended when using washout films.

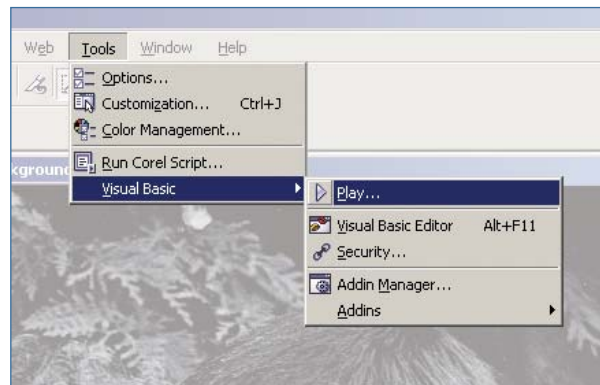


Figure A

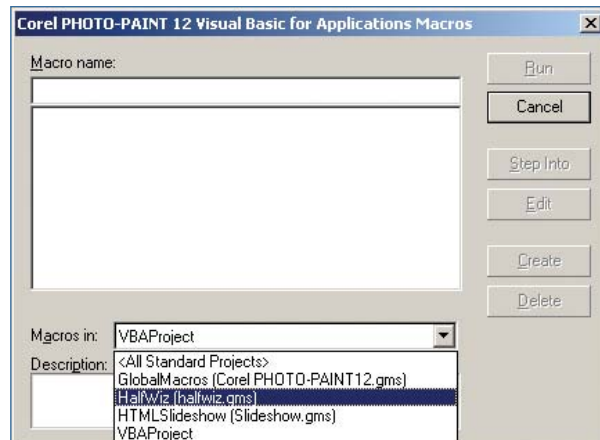


Figure B

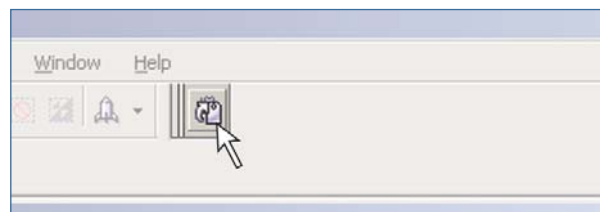


Figure C

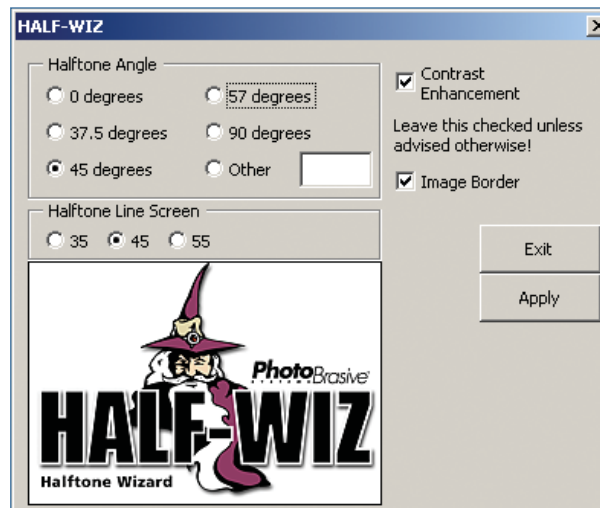


Figure D

PhotoBrasive[®]
S Y S T E M S

PhotoBrasive Systems, 4832 Grand Ave., Duluth, MN 55807
phone: 218-628-2002 • toll free: 800-643-1037 • fax: 218-628-2064
e-mail: sandcarver@photobrasive.com • www.photobrasive.com