



Original



Result



[Click to Download Half-Wiz](#)

User Guide

1. Installation

- Open the "ADOBE PHOTOSHOP" folder
- Open the "PRESETS" folder
- Open the "ACTIONS" folder
- Drag the "HALFWIZ" file into the "ACTIONS" folder

2. Open an Existing File

- Launch Adobe Photoshop
- Click "FILE", and then select "OPEN".
- Navigate to where your file is, select the file, and click "OPEN"
- Click "OKAY"

3. Open the Actions Panel

- Click "WINDOW"
- Click "Actions" (see Fig. a)

4. Load Halfwiz Action file

- Open the Actions Panel drop menu
- Select "LOAD ACTIONS..." (see Fig. b1)
- Locate the Halfwiz action file (see Fig. b2)
- Click "LOAD" (see Fig. b3)

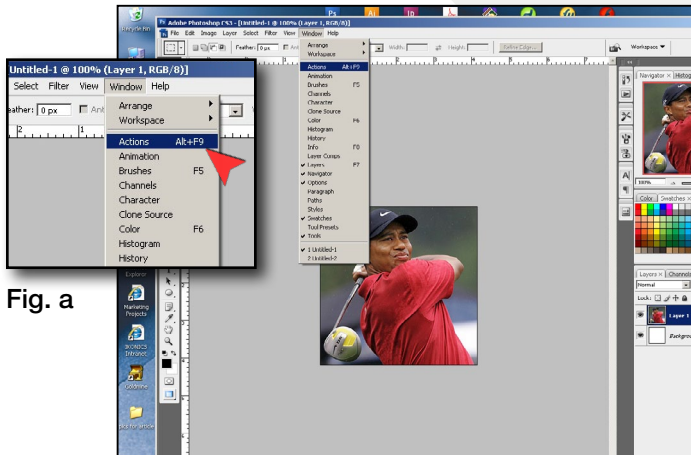


Fig. a

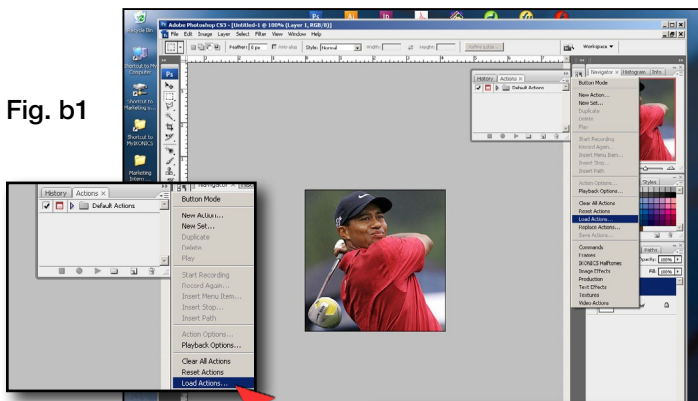


Fig. b1

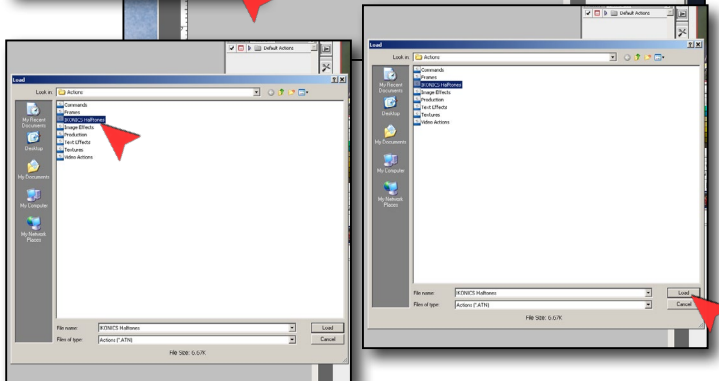


Fig. b2

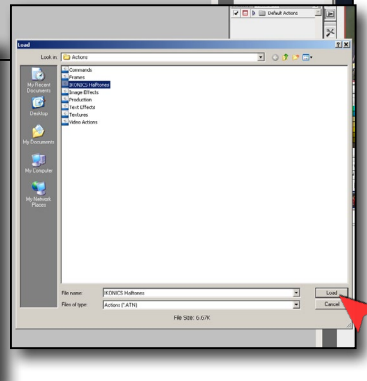


Fig. b3

Fig. c1

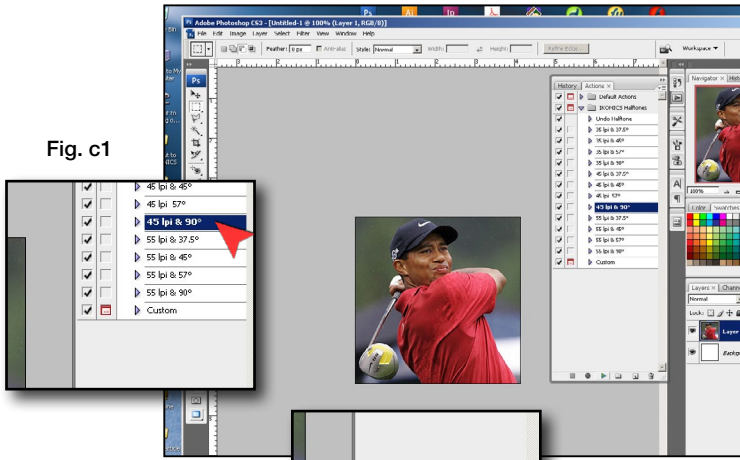
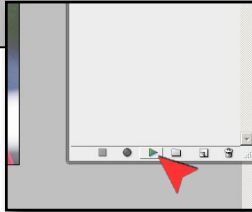


Fig. c2



5. Play Halfwiz*

Open the "HALFWIZ" folder in the Actions Panel by clicking on the arrow left of the folder icon.

Select a preset (e.g. "35 LPI & 45°") or select "CUSTOM" (see Fig. c1)

Click the play button in the Actions Panel (see Fig. c2)

** Note: Using the Halfwiz "CUSTOM" setting requires advanced knowledge of Adobe Photoshop and is not covered in this user guide.*

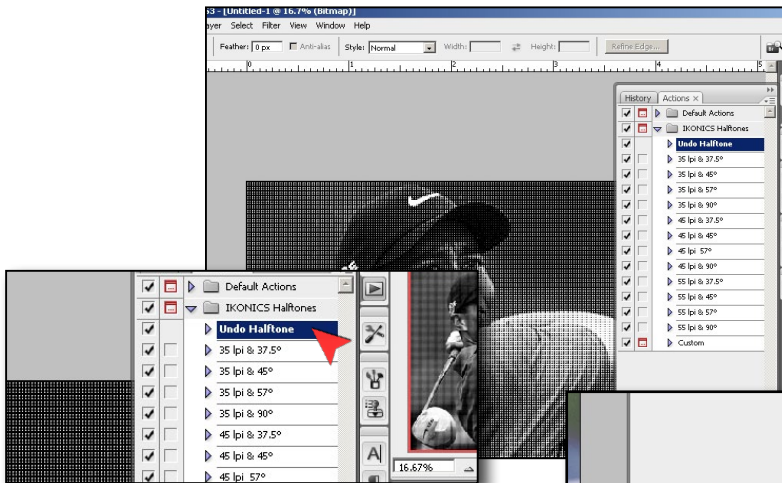
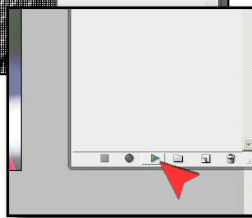


Fig. D1

Fig. D2



6. UNDO Halfwiz (optional)

If the halftone result is not desirable:

Select "UNDO Halftone" from the Halfwiz folder in the Actions Panel (see Fig. d1)

Click the play button in the Actions Panel (see Fig. d2)

Repeat Step 5