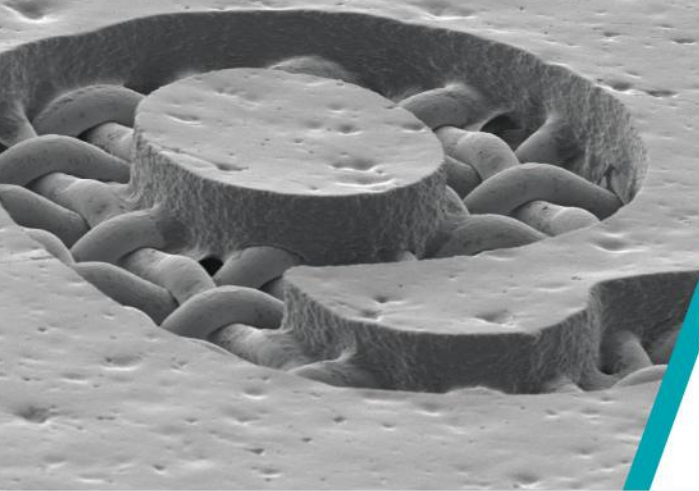




# ALPHA™

MICRO-CAP D CAPILLARY FILM

*Alpha Micro-Cap D capillary film at 500 x Magnification. Microphotography supplied by Chromaline Labs™. Chromaline's latest Alpha Micro-Cap D applied to 400 stainless steel mesh.*



## ALPHA™ MICRO-CAP D KEY FEATURES

- Diazo capillary film
- Superior mesh penetration and adhesion
- Available in 15, 25, 30, 38 & 50 micron profiles
- Consistent application
- Uniform stencil thickness

### SAFETY AND HANDLING

There are no hazards associated with this product when used within reasonable standards of industrial hygiene and safe working practices. Refer to SDS for further information.

### STORAGE

**Pre-Sensitized Alpha Micro-Cap D** films are light sensitive and should be opened only under yellow or subdued lighting. Chromaline recommends that unexposed film be stored in sealed original container in a cool, dry area.

**Coated, unexposed screens** can be stored as long as one month in a clean, cool, dry and completely dark area.

**Best if used within** one year when stored between 65°F and 75°F. Film degrades quickly when stored above 110°F. Store film in sealed tube or box when not in use.



## Chromaline Screen Print Products

4832 Grand Ave. Duluth, Minnesota 55807 **Tel:** 218-628-2217 **Fax:** 218-628-3245

**Web Site:** [www.chromaline.com](http://www.chromaline.com) **E-mail:** [sales@chromaline.com](mailto:sales@chromaline.com)

AN **IKONICS** COMPANY

ISO 9001 CERTIFIED

NASDAQ LISTED: **IKNX**



**USER'S GUIDE**

# ALPHA™ Micro-Cap D

## INSTRUCTIONS

### DEGREASE

Use Mesh Degreaser 260 for best results, especially when using stainless steel mesh. The 260 will improve the adhesion of the capillary film to all mesh types, especially stainless steel mesh.

### DEVELOP

Gently spray both sides of screen with tepid water, wait 30 seconds then gently wash print side of the screen until image is fully open. Rinse both sides thoroughly. Dry screen completely and you are ready to print.

### RECLAIM

Apply Chroma/Strip™ screen reclaimer to both sides of screen. Scrub area to be reclaimed with a stiff nylon brush to ensure entire surface is wet and let it work a few moments until stencil begins to dissolve. Remove stencil residue with pressure washer, then rinse with water, thoroughly flooding screen and frame.

### EXPOSURE GUIDELINES

Refer to the Chromaline Exposure Calculator to determine optimal exposure times. Individual exposure times may vary depending upon equipment used, bulb age, and other shop conditions.

### FOR INCREASED RESISTANCE TO HUMIDITY

Chroma/Set™ stencil hardener keeps presses running during periods of high temperature and high humidity. This easy to apply liquid produces dramatic results.

## FOR TECHNICAL SERVICE

Call Toll Free: **1-800-328-4261**

Email: **help@chromaline.com**

(Outside North America Call +1-218-628-2217)

