



Simple Sandcarve Software

USER GUIDE

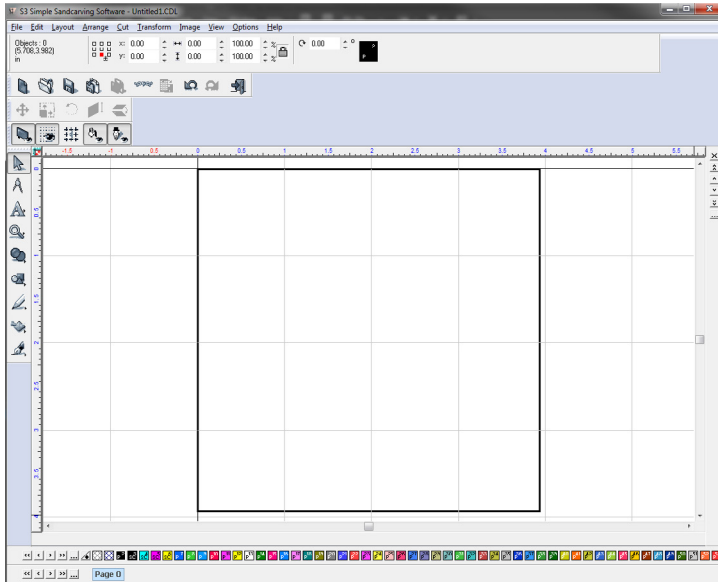
**S3 is the ONLY software available
that was created specifically with the
sandcarving industry in mind.**

HELPFUL SHORTCUT KEYS

Scroll (mouse)	zooms in/out
Alt+S	shows outline mode
Ctrl+D	duplicate item
Ctrl+A	selects all text
Ctrl+Z	undo
Ctrl+Y	redo
Tab	cycles through objects
Ctrl	move item on axis

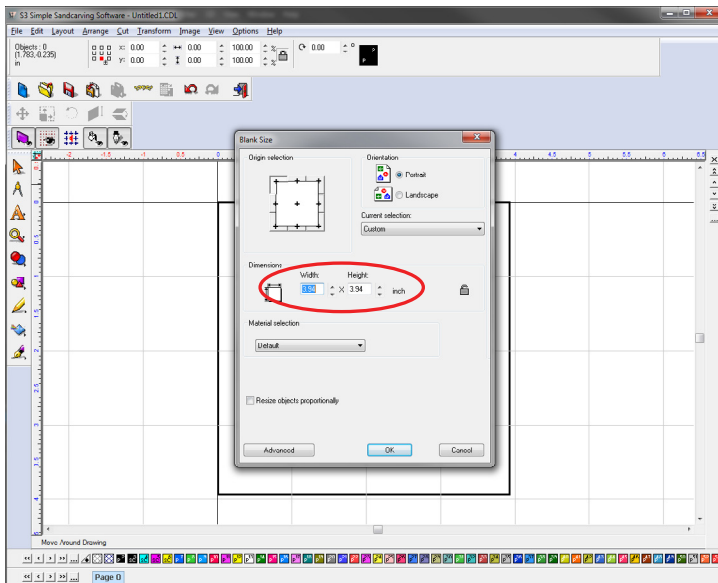
CONTENTS

Setting Up Your Workspace	4
Import Artwork	6
Reflect Artwork	7
Convert Artwork To Vector Art	8
Invert Artwork for RapidMask	11
Step & Repeat (Array)	12
Working With Text.	13
Crop Image	14
Resize Image	15
Convert Jpeg to Halftone	16



SETTING UP YOUR WORKSPACE

Get started by setting up your workspace to work best for you.



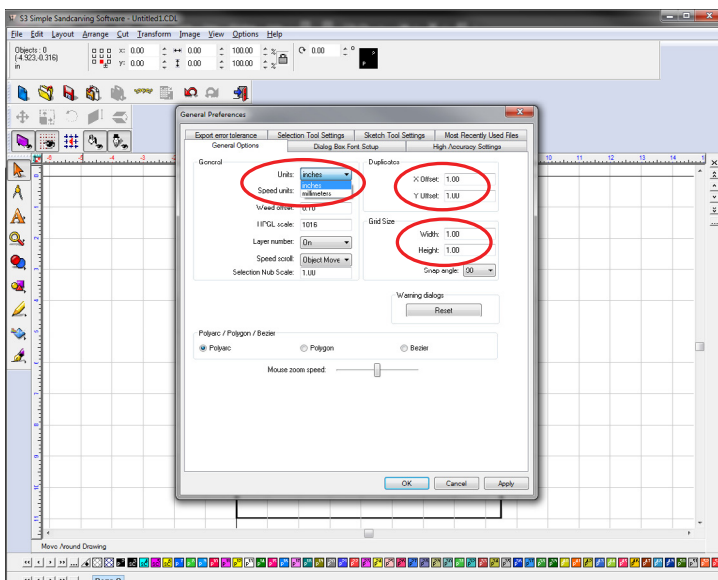
1

Layout --> Blank Size

The black border represents your blank size (or page size). The default is 3.94 x 3.94.

Choose page orientation and select page size, or enter custom dimensions.

Under the Advanced tab you can create a customized size list for your most commonly used page sizes.



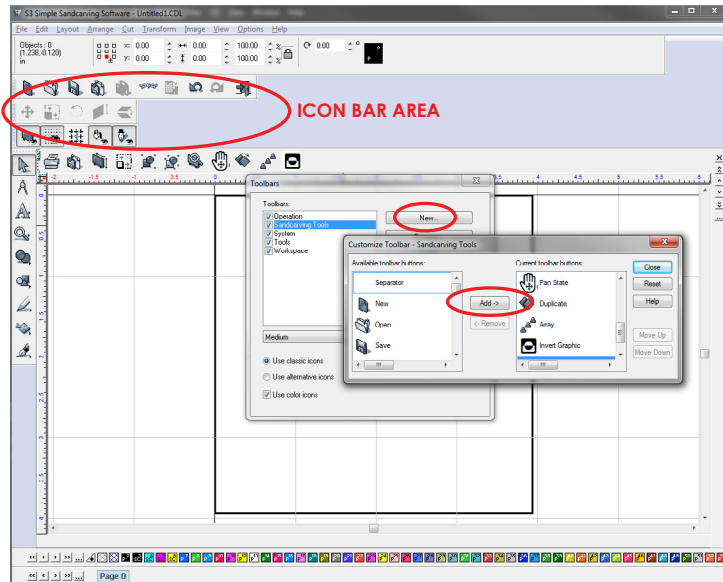
2

Options --> S3 Setup --> General Preferences

Choose inches or millimeters for units of measure.

Choose your duplicate offset setting (default is 1 inch; change to 0 for items to be duplicated on top of each other).

Choose your grid size (default is 1 inch squares).



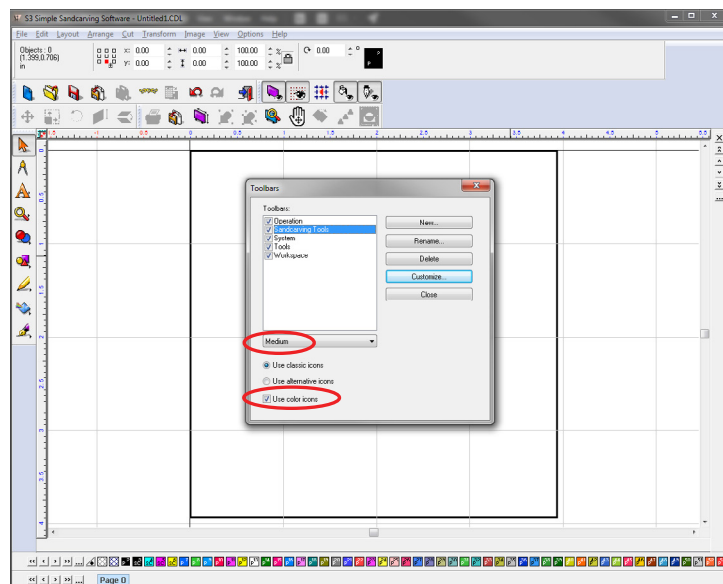
3

Icon Bar Area --> Right Click --> Customize

You are able to customize any of the existing toolbars, or create your own.

All toolbars are dockable, can be moved around, can be renamed, and can be customized with any tool.

For sandcarving, some good tools to add to the toolbar are: Print, Import, Blank Size, Group, Ungroup, Zoom To Sign Blank, Pan State, Duplicate, Array and Invert Graphic.

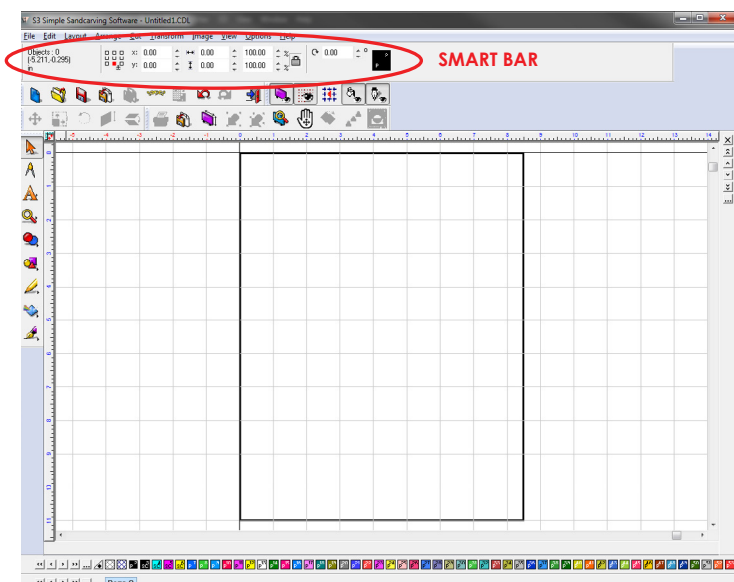


4

Icon Bar Area --> Right Click --> Customize

To change the size of the icons, select from the dropdown.

For color icons, check the "Use color icons" box.



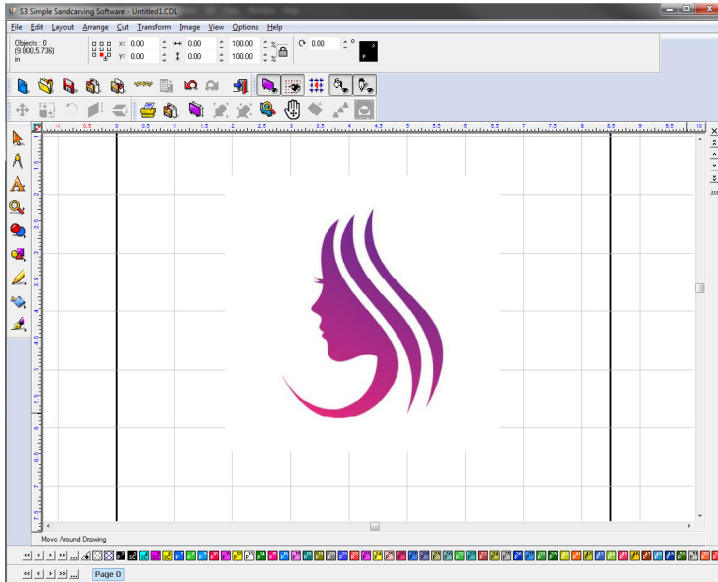
5

Smart Bar

The bar along the top is called the Smart Bar. This options on this bar change depending on which tool you have selected.

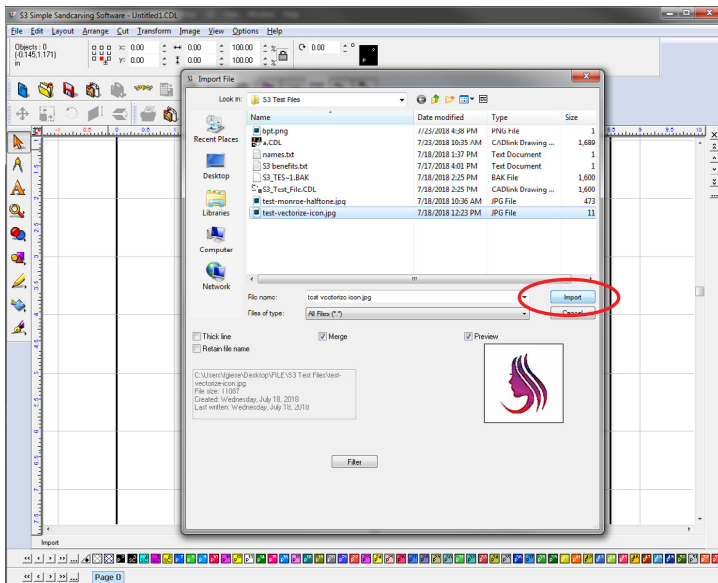
This is the only toolbar you are not able to customize or move.

Hover over any icon in the Smart Bar or Toolbars to reveal the icon tool name.



IMPORT ARTWORK

Get started by importing artwork into your file.

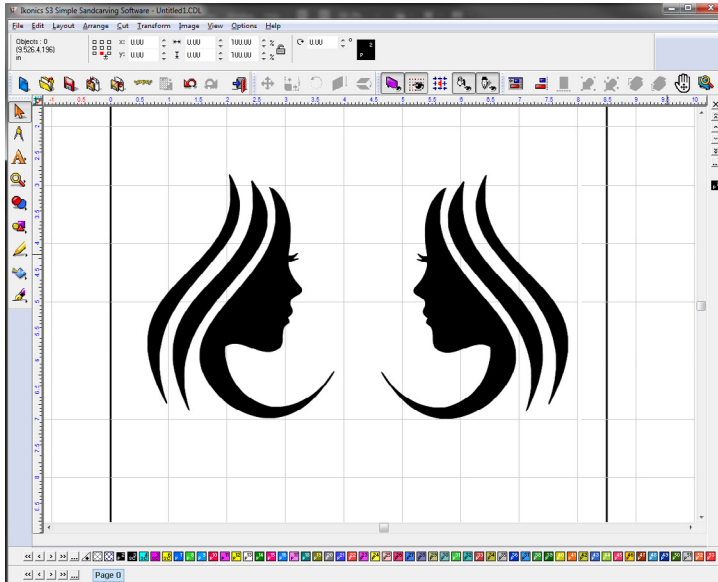


1

To import, go to:
File --> Import

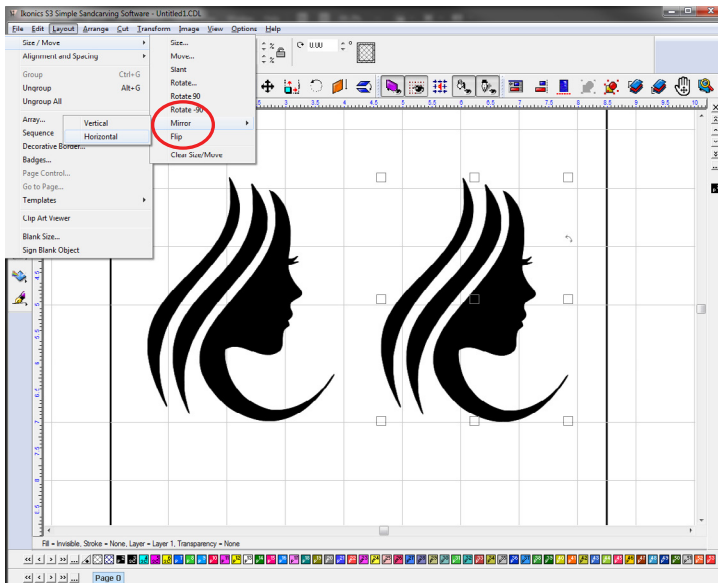
Choose the file you want to import and click "Import". You are able to import a wide variety of file types into S3.

Click to place the image at full size, or draw a box with the crosshair to place the image within the box size.



REFLECT ARTWORK

Easily mirror your artwork for back printing.

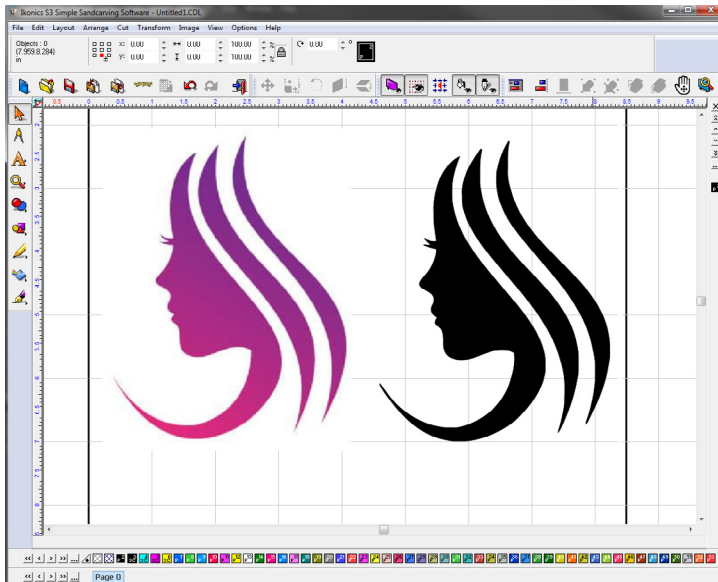


1

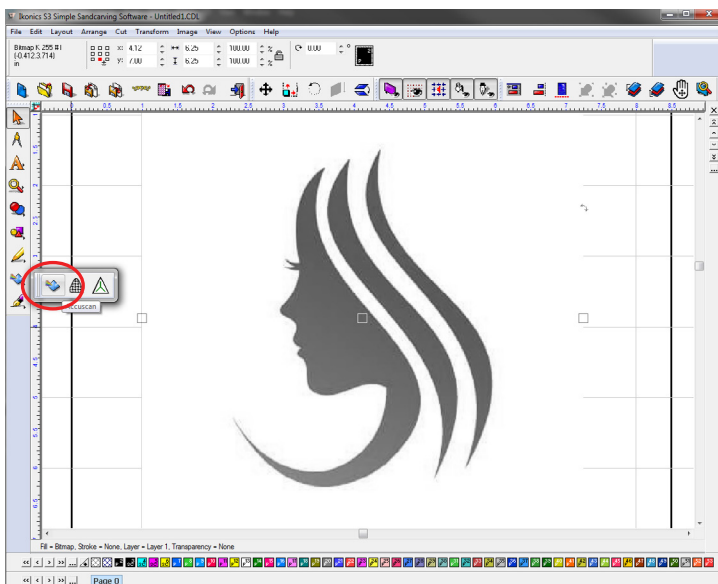
Select the image using the orange selection arrow.

To reflect, go to:
Layout --> Size/Move --> Mirror --> Horizontal or Vertical

That's it!



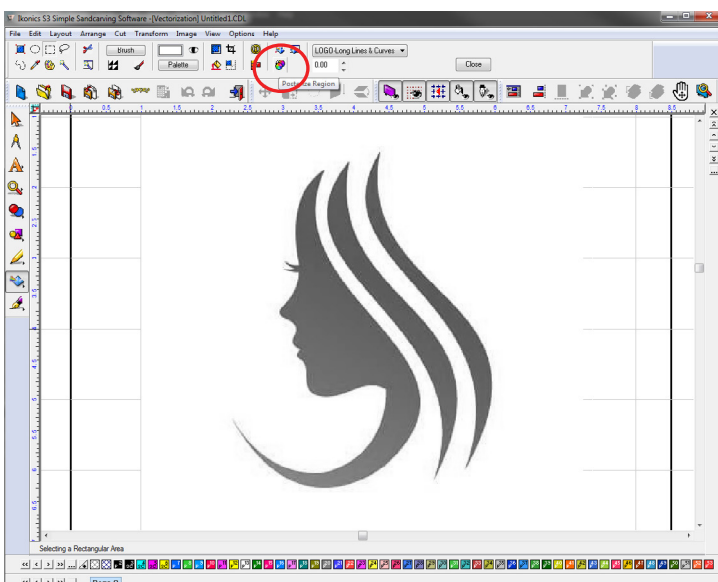
Import a jpeg and convert to vector art for crisp lines when sandblasting.



1

If necessary, convert the image to grayscale. Image --> Mode --> Grayscale

Select the image using the orange selection arrow. Then select the prism icon (Accuscan) from the left toolbar under Scan Tools.



2

Once you select the Accuscan prism, the Smart Bar at the top of the screen will change to reflect options related to your selected tool.

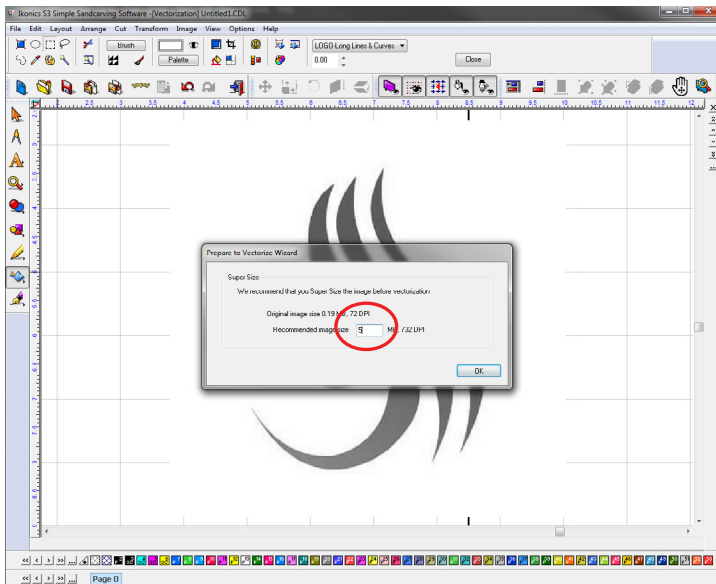
Select the Posterize Region button in the toolbar (two overlapping circles).

Select YES when asked, "Do you want to run the 'Prepare to Vectorize' wizard?".

3

On the Prepare to Vectorize Wizard screen, you can change the MB number.

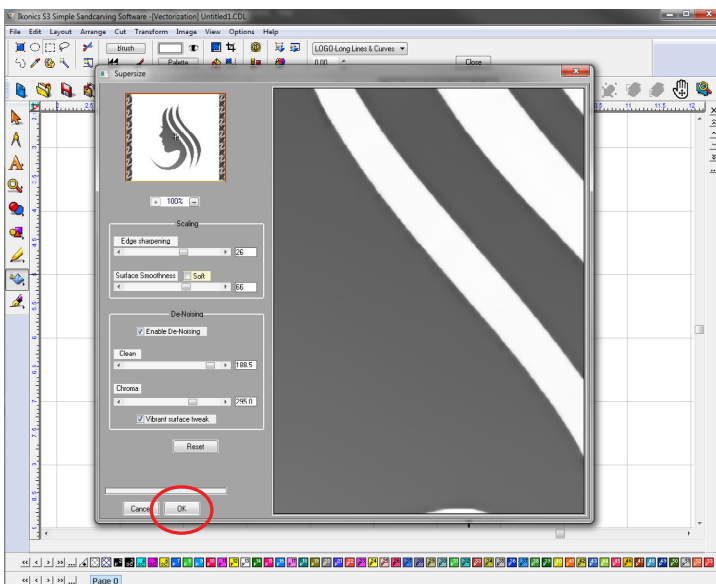
We recommend 5 MB as a standard starting point.



4

On the Supersize screen, you may need to adjust the settings to fine tune depending on your image.

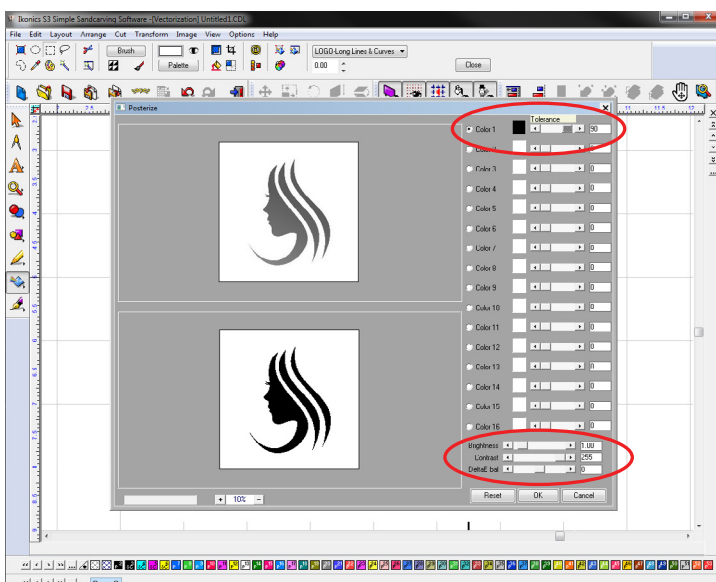
Click OK when you are happy with the preview.



5

On the Posterize screen, adjust the tolerance of the black color until you are happy with the preview. You may also need to adjust Brightness, Contrast and DeltaE bal.

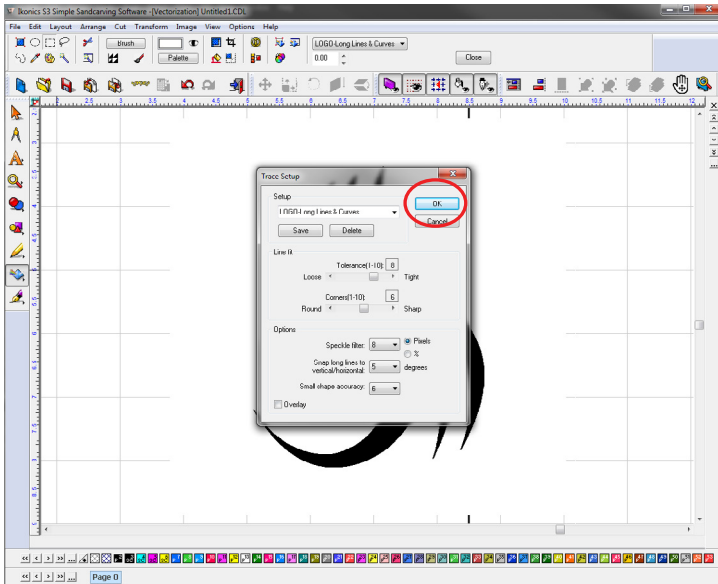
Click OK when done.



6

On the Trace Setup screen, you can choose one of the presets, or adjust the numbers on your own as needed.

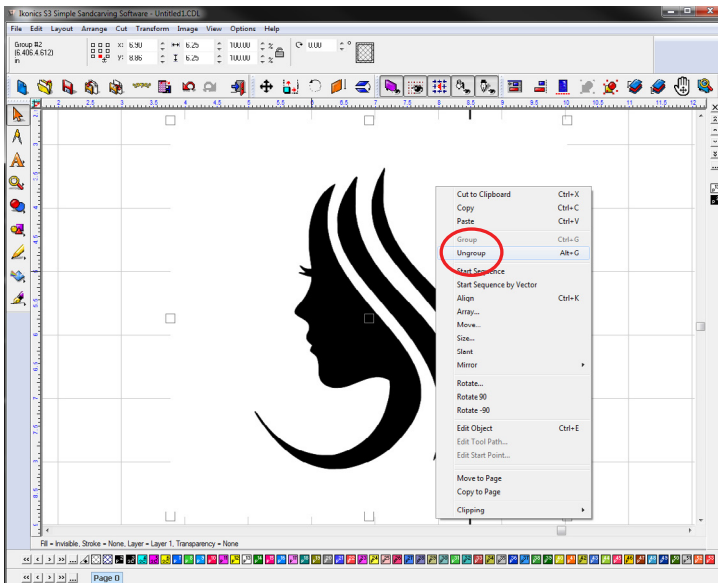
Click OK when done.



7

Select the image and ungroup. Layout --> Ungroup or Right Click --> Ungroup

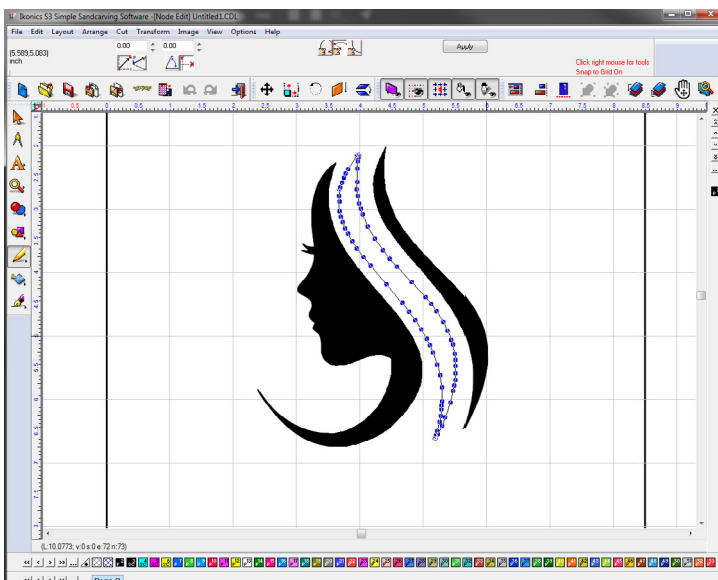
Once the artwork is ungrouped, you will be able to select the white background and delete it or cleanup any unwanted pieces of artwork.

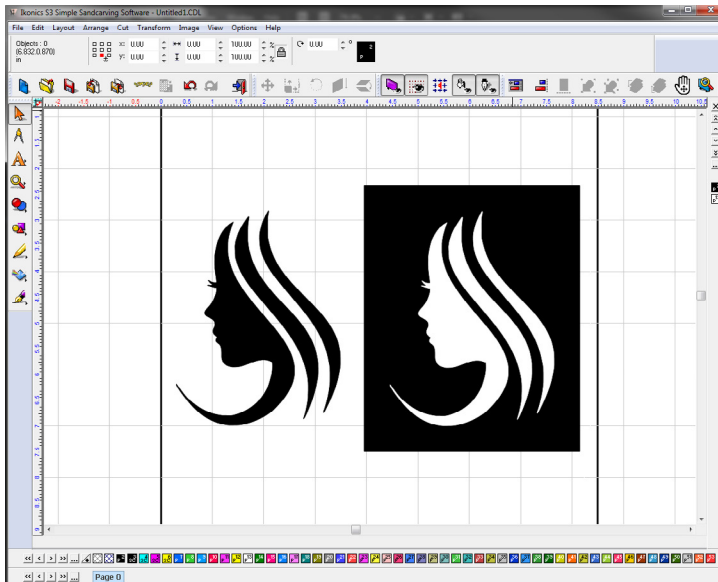


8

In order to adjust the individual nodes of the artwork, double click on the piece you want to adjust.

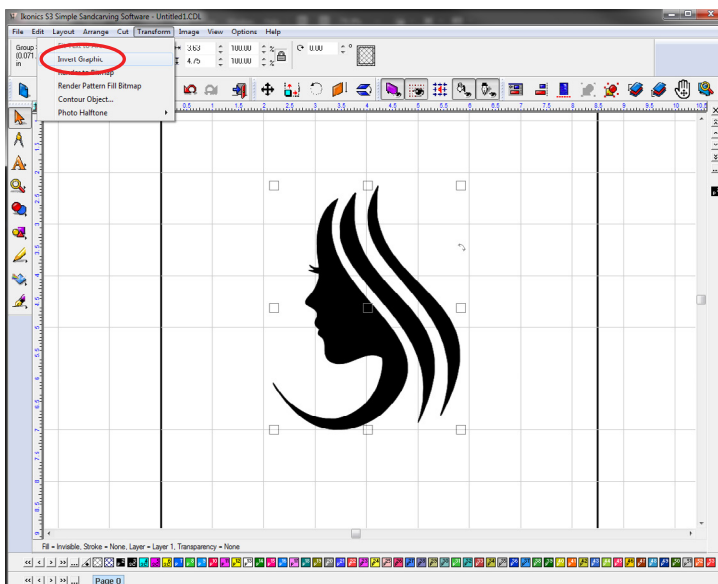
Once you are finished with adjustments, regroup the pieces.





INVERT ARTWORK FOR RAPIDMASK

Invert your art with one click to create a negative image.

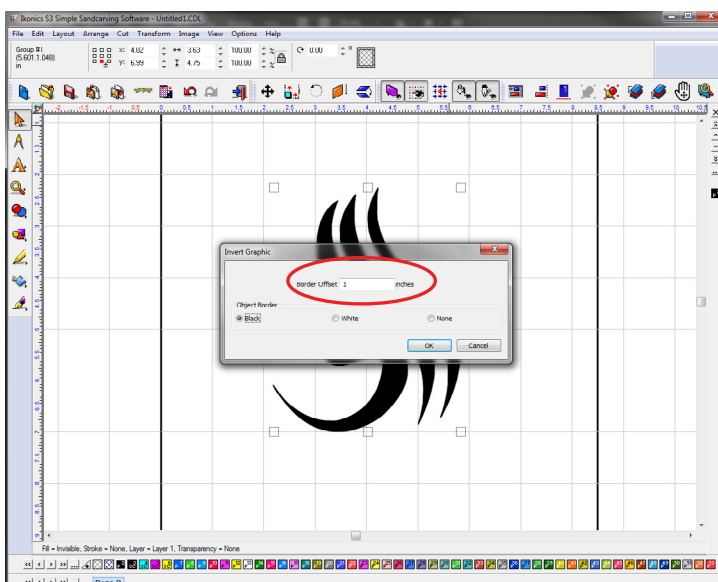


1

Start with vector artwork.

Select the image using the orange selection arrow.

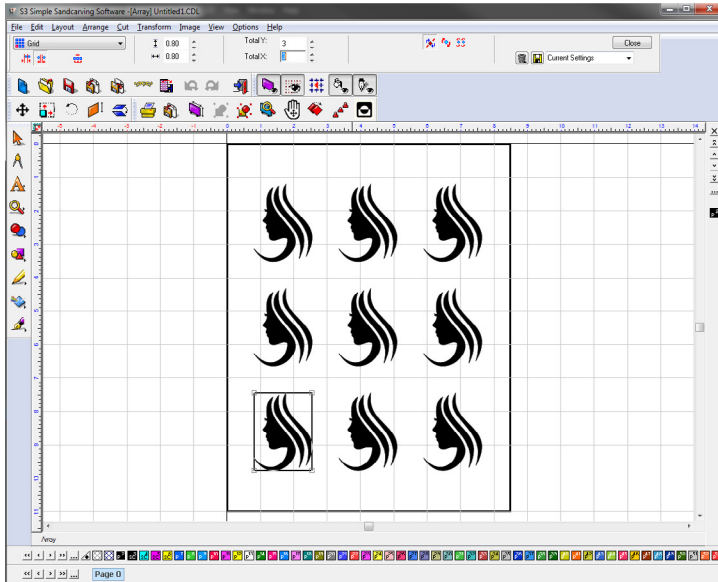
Then invert, go to:
Transform --> Invert Graphic
(or use the icon in your toolbar)



2

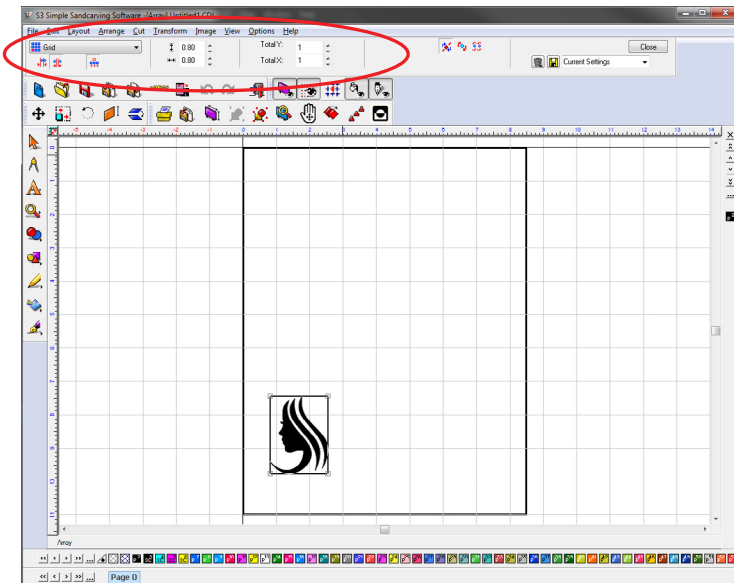
On the Invert Graphic screen, choose your Border Offset size and Object Border color. Select OK.

That's it!



STEP & REPEAT

When you want to add multiple items to one page to fill up a sheet for printing, use the Array tool.

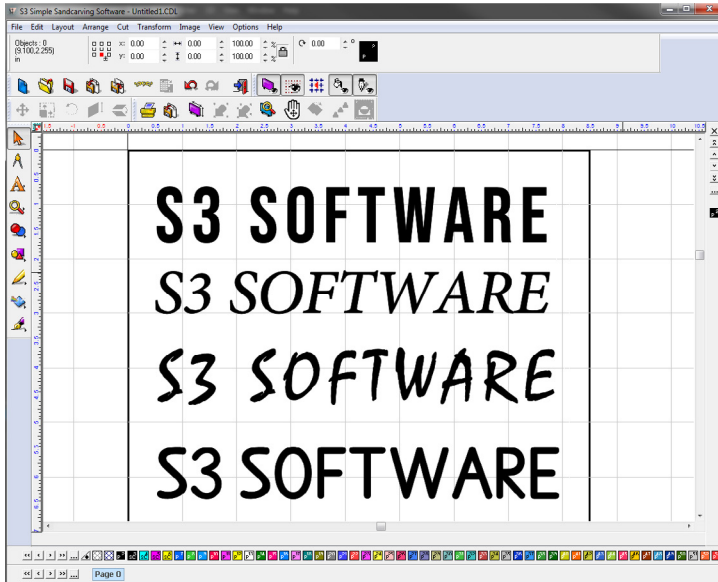


1

Layout --> Array (or click icon in toolbar)

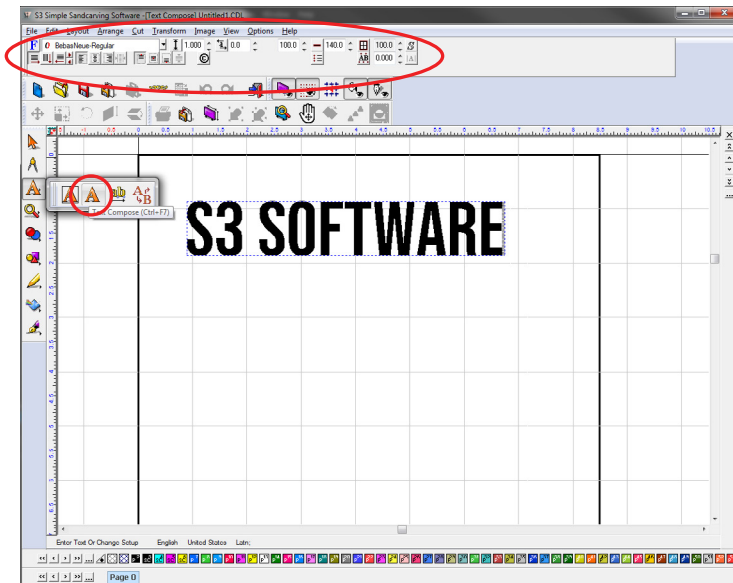
Place your object in the lower left corner and select the Array tool. Once the Array tool is selected, the options in the Smart Bar will appear.

Choose the spacing you want between your objects and click the X and Y arrows to create multiple items on your page.



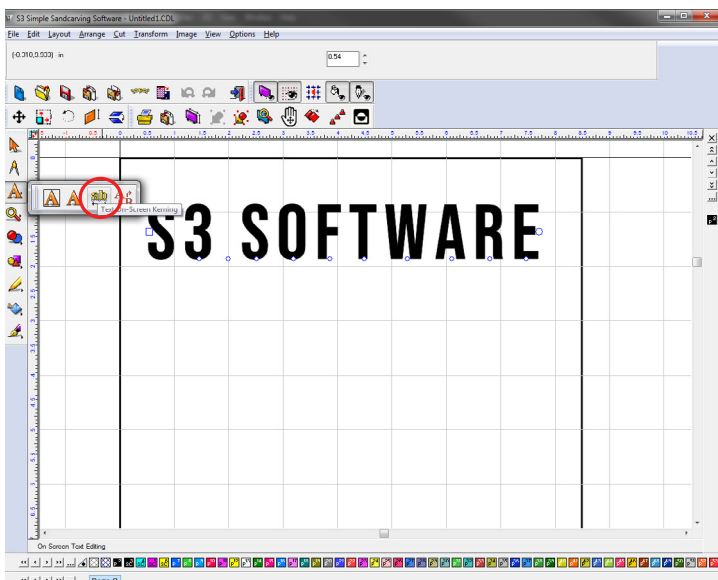
WORKING WITH TEXT

The text in S3 is Smart Text, meaning you can scale and adjust it like artwork, but it remains editable as text.



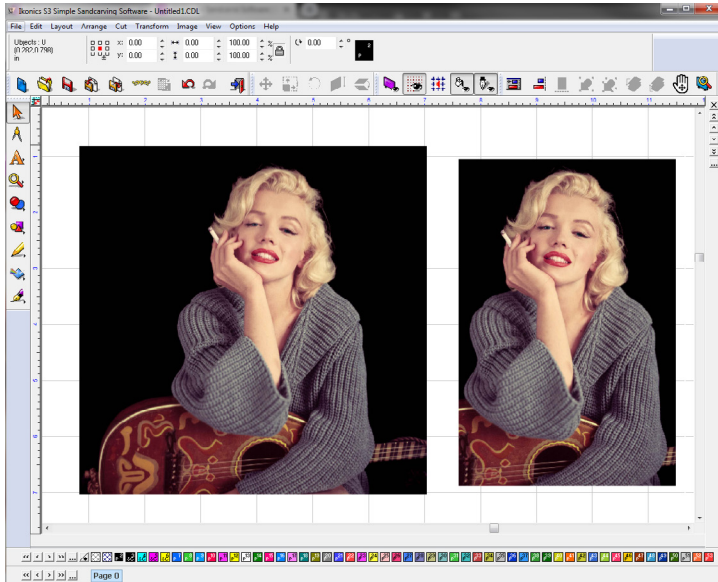
1

Use the Text Compose tool to create text. Use the options in the Smart Bar at the top to adjust the text, including font, font size, spacing, justification and more.



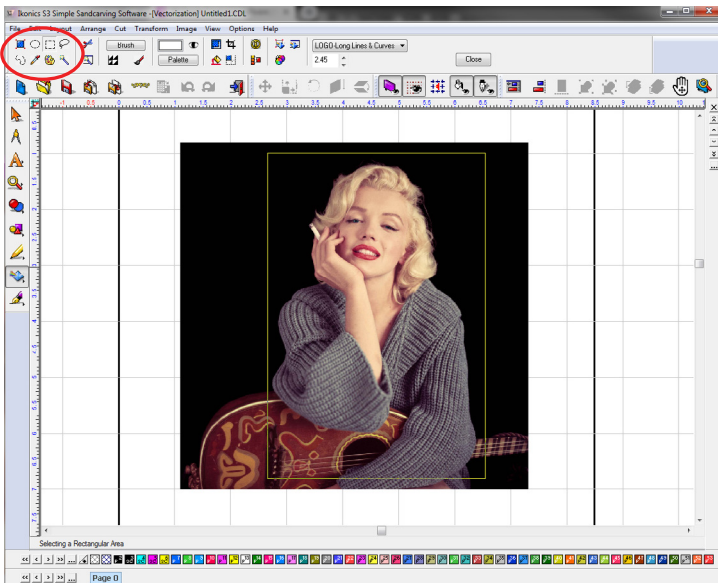
2

Use the On Screen Kerning tool to easily adjust the spacing between letters while still keeping it live text.



CROP IMAGE

The crop tool cuts the hassle from the photo cropping process in just one click.

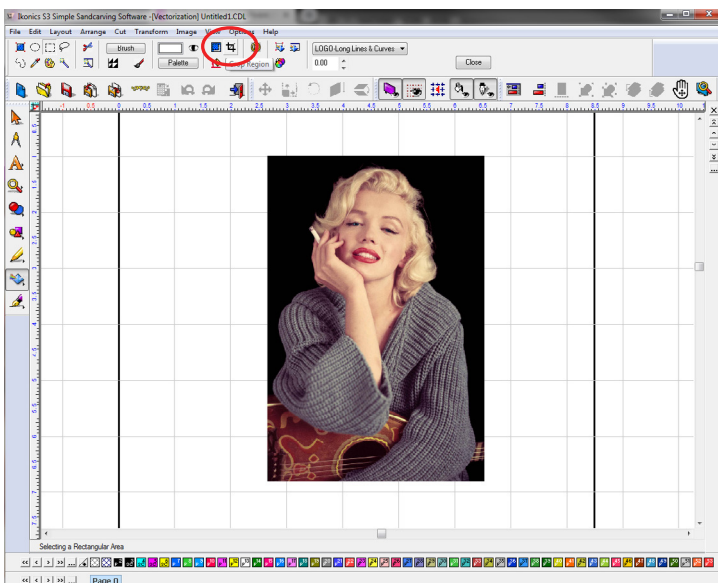


1

Select the image using the orange selection arrow. Then select the prism icon (Accuscan) from the left toolbar under Scan Tools.

Once you select the Accuscan prism, the Smart Bar at the top of the screen will change to reflect related options.

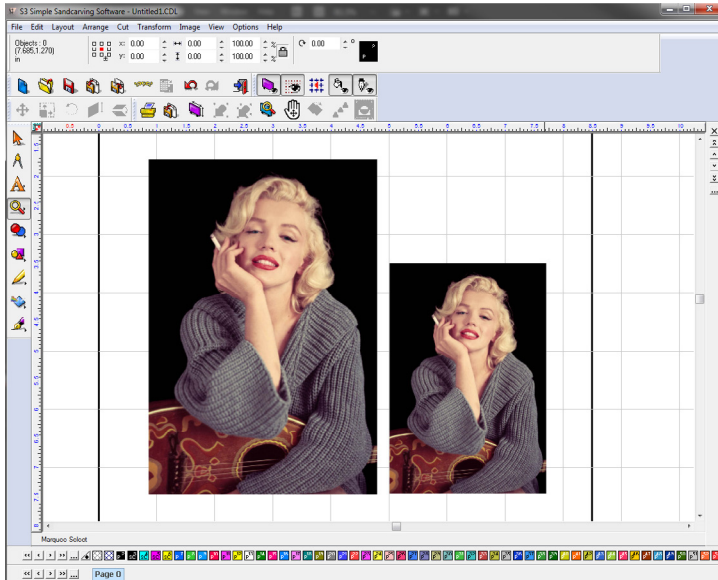
Using one of the selection tools (ex. rectangle), select the area of the image you want to crop.



2

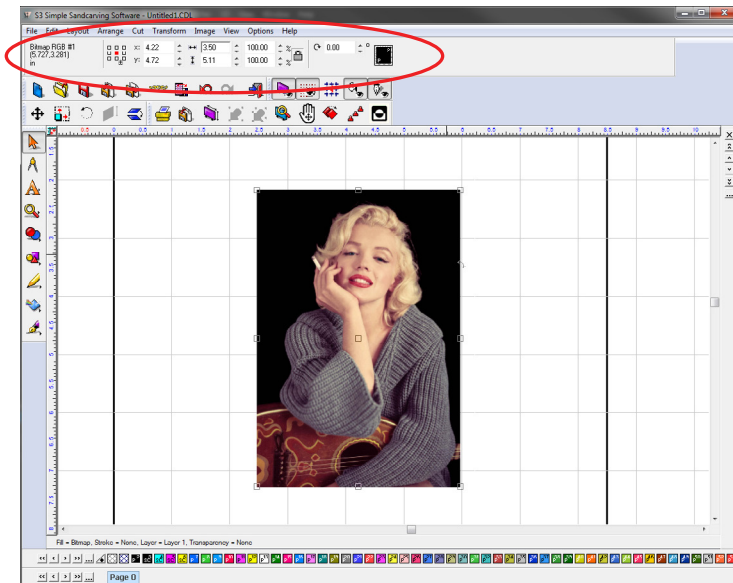
Click the "Crop Region" button to crop the image based on your selection.

That's it!



RESIZE IMAGE

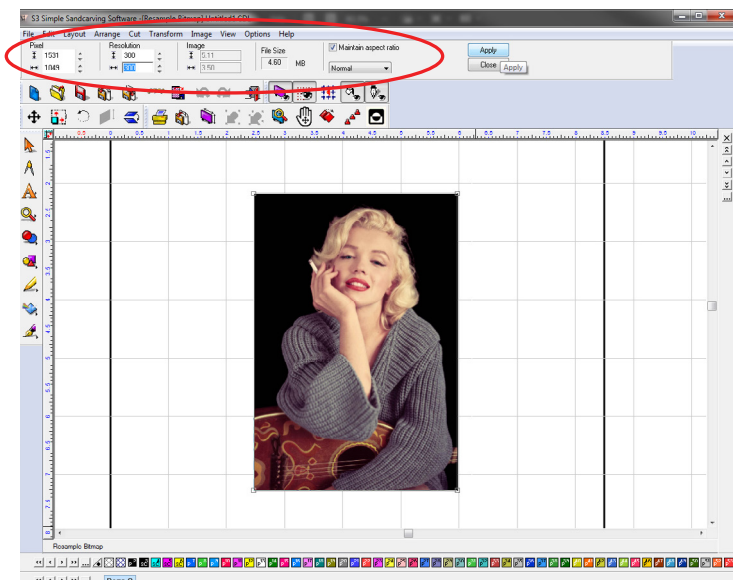
Once you have your image cropped to where you want it, you can easily resize.



1

Select the image using the orange selection arrow. The Smart Bar at the top will change. Change either the width or height to your desired size.

Make sure the lock icon is selected. With the lock icon selected, the image will remain proportional.

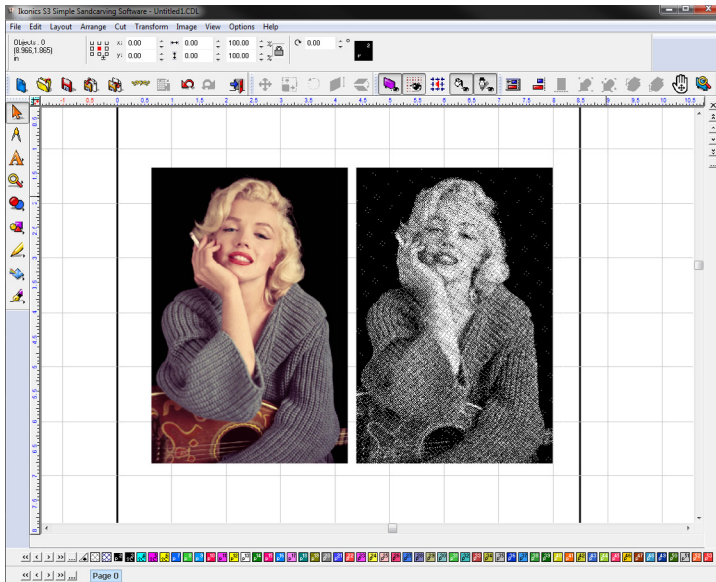


2

If you would like to adjust the resolution, go to Image --> Image Size. The Smart Bar at the top will show resolution.

CONVERT JPEG TO HALFTONE IMAGE

Resize image and convert to halftone with just a few clicks.

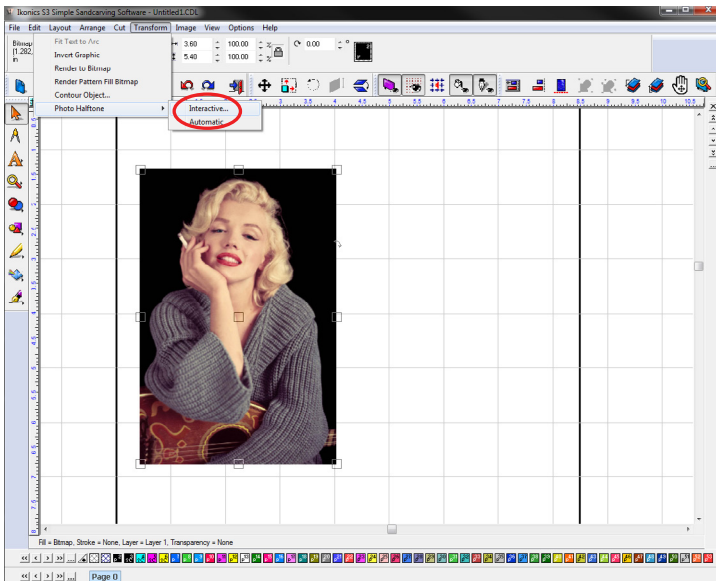


1

Select the image using the orange selection arrow.

Then go to:

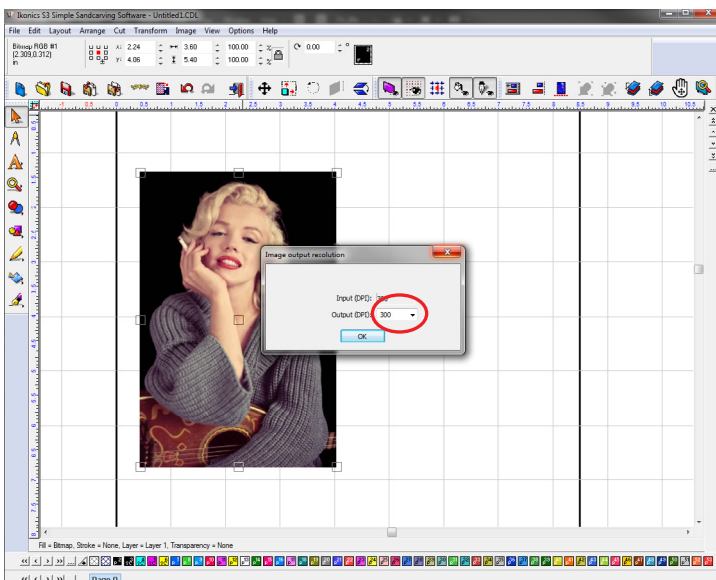
Transform --> Photo Halftone --> Interactive



2

On the Image Output Resolution screen, the Output (DPI) should be 300.

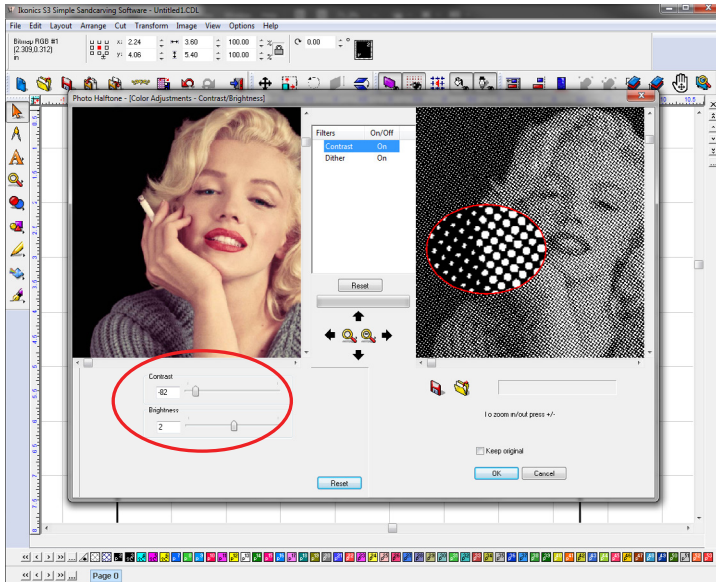
Click OK.



3

On the Photo Halftone Screen, adjust the Contrast and Brightness for the white and black areas until you get the desired result.

Zoom in/out using +/- or the magnifying glasses. Click and hold on a part of the image to get an extreme close-up.

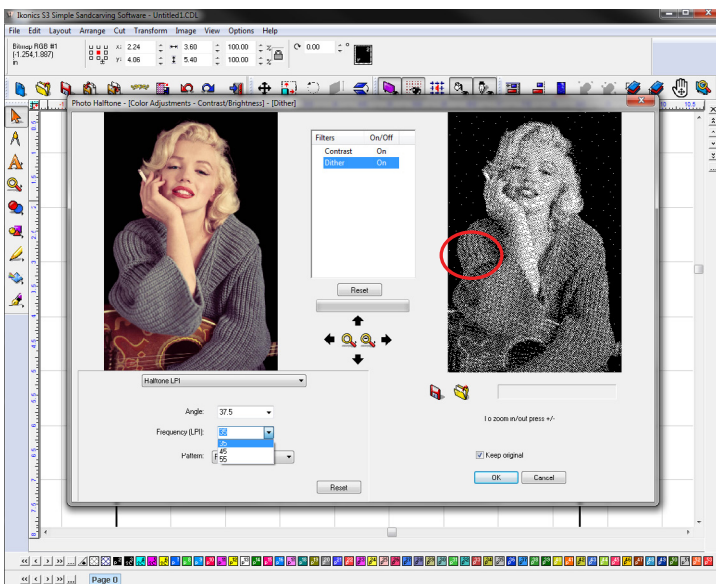


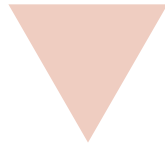
4

Click on the Dither section to adjust the angle and frequency (LPI).

Select "Keep original" in order to do a side by side comparison.

Click OK to create the halftone.





Contact IKONICS Imaging for
additional questions and support:

(800) 643-1037

info@ikonicsimaging.com

Video tutorials available online at:

www.ikonicsimaging.com/S3