

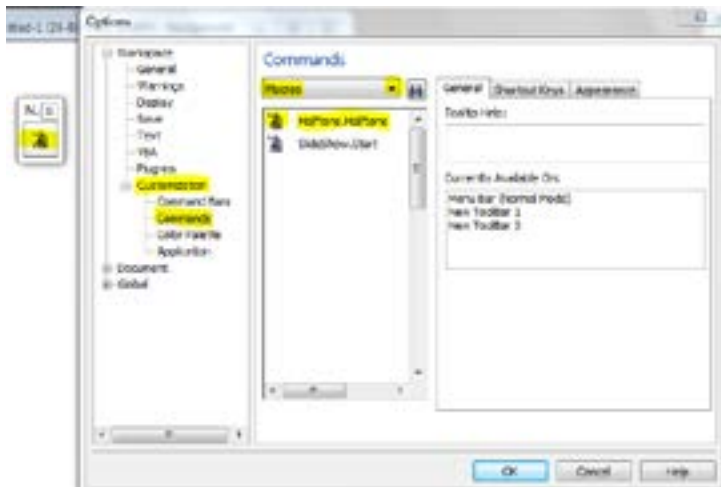
Call us today for more information at
800-643-1037 or visit our website
www.ikonicsimaging.com.



QUICK TIP:

Install an icon on the toolbar and get to the halftone window with just one click. Here's how:

1. In Corel Photo-Paint click on "TOOLS", then select "OPTIONS".
2. Click on "COMMANDS" (under "– Minus Sign/CUSTOMIZATION")
3. Click on dropdown arrow by the word "File".
4. Click on "MACROS", a list will appear and one should be "HALF-WIZ (HALFWIZ.GMS) or "HALFTONE.HALFTONE".
5. Click and hold to drag this icon to the tool bar on top.
6. Icon will appear there as a "tag" and/or say "Halftone.Halftone".
7. Click "OK" to close window.



[Click to Download Half-Wiz](#)

USER'S GUIDE

Photo quality halftones are a wiz with the Half-Wiz halftone wizard brought to you by IKONICS Imaging and Corel®. Half-Wiz works with Corel Photo-Paint to streamline the halftoning process.

Halftones. Half the work.

INSTALLATION in Corel Photo-Paint 11, 12, X3, X4, X5, or X6:

1. Double click on "**Click to Download Half-Wiz**" above.
2. You'll see the HalfWiz.zip file. Open it.
3. You'll see the HalfWiz.gms file.
4. Using your mouse, do a right click and "copy" the file.
5. Now, minimize everything (dashed line top right of your screen).
6. Go to START and right click — then click on "Explore".
 - a) **Windows 6 or older**
Go to START and right click— then click on "Open Windows Explorer".
Folders will appear on the left of your screen. Scroll down to "Program Files" and double click.
 - a) **Windows 7**
Locate and click on OS (C:) Drive. Then locate "Program Files" or "Program Files (x86)" and double click — whichever one has a Corel folder.
7. Look for "Corel" on the right set of folders, and double click on it.
8. Double click on "Corel Graphics X4", "Corel Graphics X5", etc.
9. Double click on "PHOTO-PAINT".
10. Double click on "GMS". You will see a few files on the screen.
11. With your cursor anywhere within this window (but not over an existing file), right click and "paste".
12. The GMS file should now be there.
13. Close everything and go back to your desktop.


If you haven't placed an icon on your desktop for Corel Photo-Paint, you should do this next:

1. Go to START and left click — then to "all programs".
2. Find the program "CorelDRAW Graphics Suite". It will show a list of programs within the suite.
3. Right click on Corel PHOTO-PAINT" and go to "send to". Then choose "Desktop (create shortcut)".
4. Go back to your Desktop. The Corel Photo-Paint icon should now be there. You can rename the file or remove the reference to the shortcut if you want.
5. Now if you double click on this new icon, it should bring you directly to the Photo-Paint opening window.

 **IKONICS IMAGING®**
www.ikonicsimaging.com



Follow us!

 (800) 643-1037

An IKONICS Company | ISO 9001 Certified | NASDAQ Listed: IKNX



HALFTONE INSTRUCTIONS

for use with Corel Photo-Paint 11, 12, X3, X4, X5, or X6

SCANNING PHOTOS

- Image Type:** Black and White Photo or Grayscale
Resolution: 800
Size: To achieve the best quality halftone, scan the photo to the final size. Example: if the original photo is 3" x 5" and the final size is 5" x 7", scan photo at 165 percent. (To find the exact percentage, a proportional wheel is recommended. You can purchase them at a craft store.)
Sharpness: Sharpen image if needed. Go to "EFFECTS/SHARPEN."

OPENING AN EXISTING FILE

- Open** Corel Photo-Paint
Click "FILE", and then select "OPEN". Navigate to where your file is, select the file, and click "OPEN"
Click "IMAGE"
Click "RESAMPLE", then change the image to final size
Click "OKAY"

START THE HALFTONE PROCEDURE

Option 1 (using "tools")

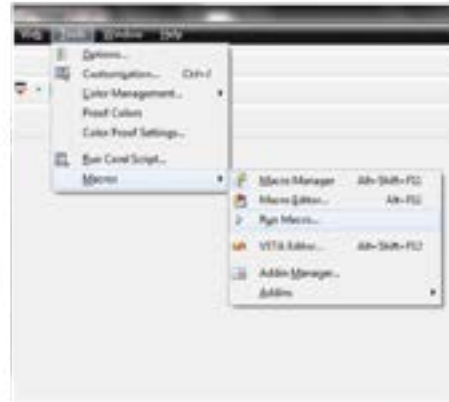
- Click** "TOOLS"
Click "MACROS" (or "VISUAL BASICS")
Click "RUN MACRO..." (See Figure A), then go to "MACROS IN:"
Click "HALFWIZ (HALFWIZ.GMS)" (See Figure B)
Click "RUN", select the Halftone Angle and Halftone Line Screen you wish to use. (See Figure D)
Click "APPLY"

Option 2 (using installed icon from Quick Tip install)

- Click** on your shortcut "tag" (See Figure C)
Click "RUN", select the Halftone Angle (degree of dots) and Halftone Line Screen (dots per lineal inch) you wish to use. (See Figure D)
Click "APPLY"

REMEMBER

Making a halftone image requires good contrast between objects within the photo. Try to avoid EXTREME contrast/brightness levels. A white wedding dress or black tuxedo, for example, should both be grayed slightly in order to produce a good halftone. Half-Wiz will automatically make these adjustments, but you should check the contrast by printing on plain paper first. If you want more contrast uncheck the "Contrast Enhancement" box. With Rapid Mask, use a photopositive for halftones. With washout films, use a photonegative. While Letralite exposure will work, best results and resolution are achieved with a vacuum frame particularly for halftones. A high pressure washer is also recommended when using washout films.



A



B



C



D